

1.12 Match pictures from the first column to pictures in the second column to make compound words from Spelling Words-1.



a. _____

b. _____

c. _____

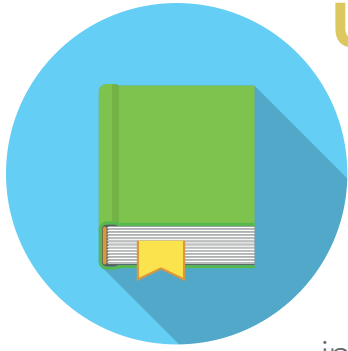
d. _____

e. _____

f. _____



Using Reference Books



Reference books are special books we use to get special kinds of information. The reference books people use most are an encyclopedia and a **dictionary**.

An encyclopedia is a book or a set of books giving information about many **subjects**. The subjects are in alphabetical order in an encyclopedia.

A dictionary is a book that tells the meaning of words. A dictionary also tells how to say each word. The words in a dictionary are in alphabetical order.

Another reference book that is used often is an **atlas**. An atlas is a book of maps. The maps are in alphabetical order in an atlas, too.

