

PRACTICE A

1. Find the missing number in each of the following:

(a) $\square + 25 = 40$

(b) $23 - \square = 6$

(c) $\square + 17 = 56$

(d) $43 - \square = 21$

(e) $58 + \square = 72$

(f) $\square - 79 = 11$

(g) $46 + \square = 100$

(h) $\square - 18 = 54$

(i) $\square + 25 = 100$

(j) $100 - \square = 93$

(k) $63 + \square = 100$

(l) $100 - \square = 57$

2. Find the value of each of the following:

(a) $100 - 38$

(b) $100 - 99$

(c) $100 - 98$

(d) $100 - 4$

(e) $100 - 9$

(f) $100 - 3$

3. A farmer had 215 ducks.

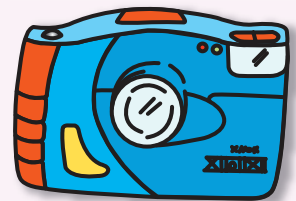
After selling some of them, he had 36 ducks left.

How many ducks did he sell?

4. Mr. Perez bought a camera for \$127.

He had \$53 left.

How much money did he have at first?



5. A cabbage weighs 324 g.

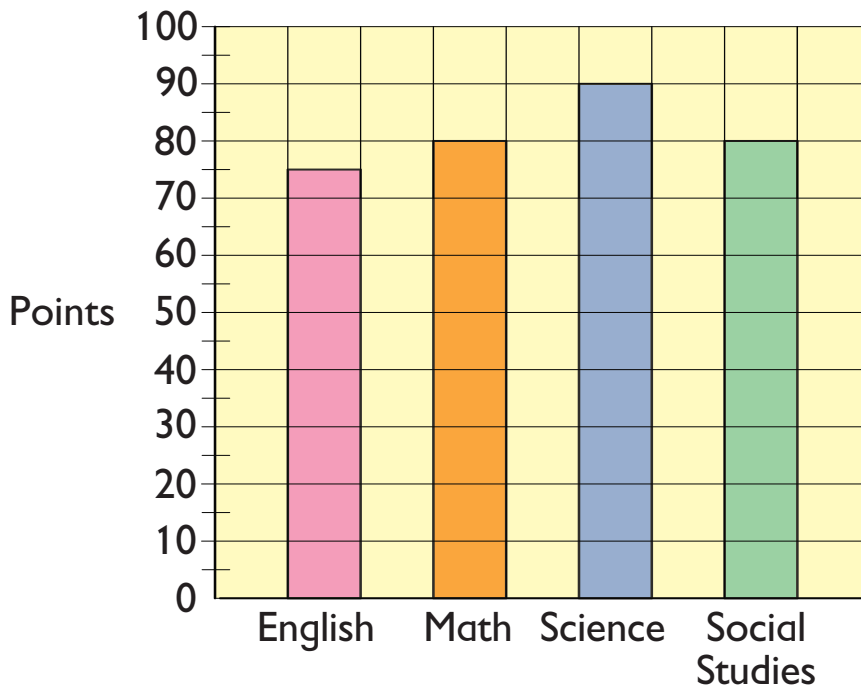
A cucumber weighs 86 g less than the cabbage.

(a) What is the weight of the cucumber?

(b) Find the total weight of the cabbage and the cucumber.



1. The bar graph and table below show Miguel's examination results for four subjects.

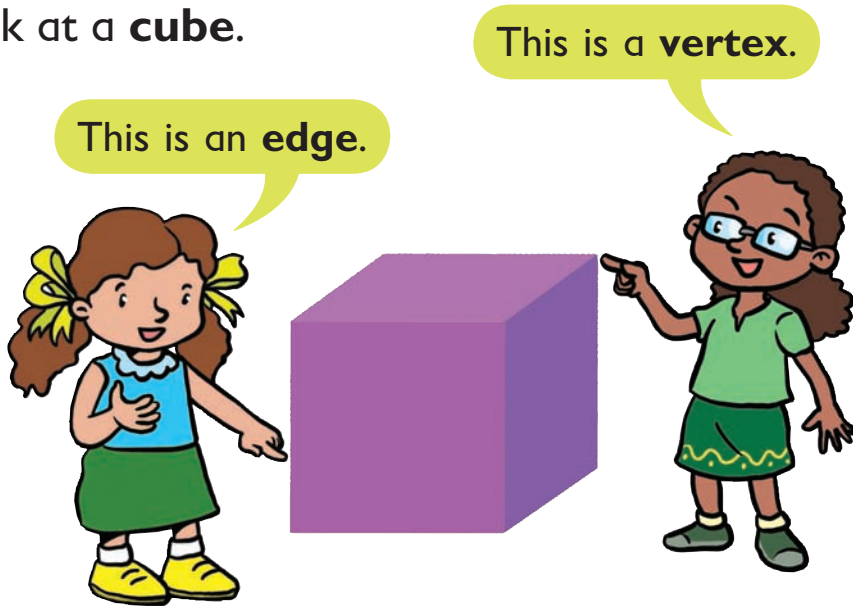


Miguel's results			
English	Math	Science	Social Studies
75	80	90	80

Use either the table or the graph to complete the following.

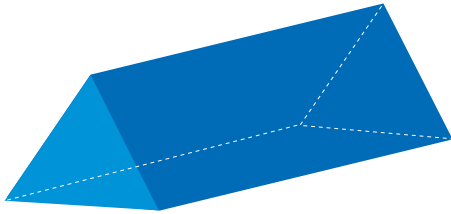
- Which score on the table appears the most number of times?
- Miguel had the same score in and .
- He scored more points in Math than in English.
- He scored 10 more points in than in Math.
- Did you use the table or the graph to answer (c) and (d)?
- What was his highest score?
- What was his lowest score?
- Did you use the table or the graph to answer (f) and (g)?

2. Look at a **cube**.



A cube has  vertices,  faces and  edges.

3. Look at a **prism**.



A prism has 2 flat faces on opposite sides that are the same.

Is a cube also a prism?

4. Look at a **rectangular prism**.



In what way is a rectangular prism different from a cube?