

ASSESSMENT GUIDE
CUMULATIVE ASSESSMENT 1**Short Answer Questions**

(Questions 1 to 6: 2 points each)

1. Count.
Circle the correct numbers.

(a)



1

2

3

(b)

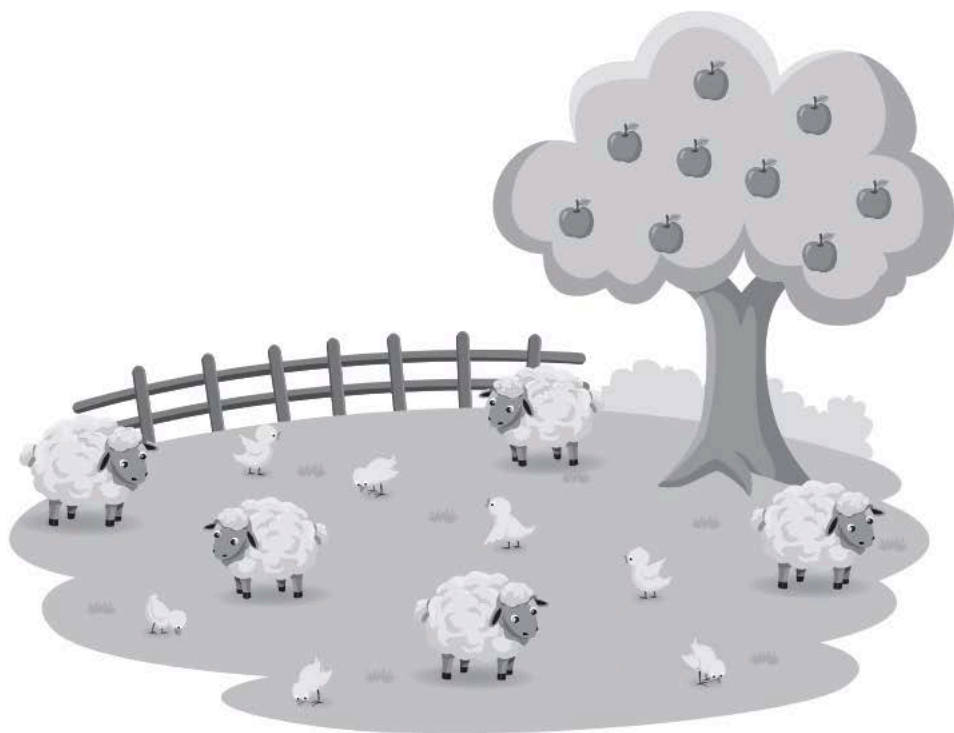


3


4

5


5. Count and write.



(a)

	
sheep	


(b)

	
chicks	

(c)

	
apples	

(d)

	
cows	



Arrange the towers in order.
How did you do it?

Observations: (Tick all that apply.)

Student could place the towers in this order:
5, 6, 7.

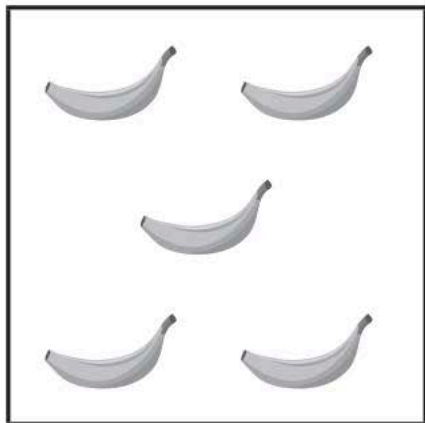
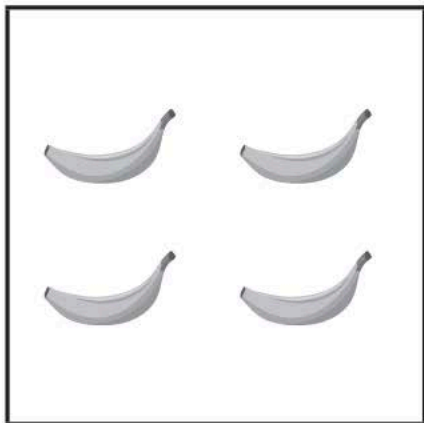
Student could place the towers in this order:
7, 6, 5.

Student was unable to put the towers in
order.

Student's explanation:

Teacher's Notes

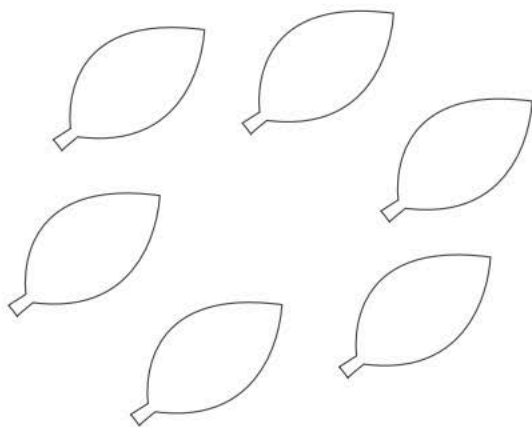
(b)



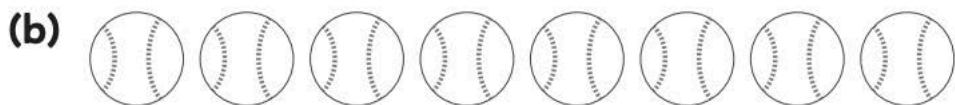
_____ and _____ make 9.

2. Use two colors to make two parts.
Write the numbers.

(a)



6 is _____ and _____.




8 is _____ and _____.

3. Circle to make 10.
Count on from 10.
Write.



10 and 3 make _____.

Write "11, _____, _____, _____, _____, _____,
_____, _____, _____, 20" on the board.

 Write the number, 11, on your paper.
Now, write all the numbers from 11 to 20 in order.
Then, read the numbers in order.

Observations: (Check all that apply.)


Student could write the numbers correctly
(Circle all that apply.)

12 13 14 15 16 17 18 19

Student could write the numbers in order.

Student could read the numbers correctly.
(Circle all that apply.)

12 13 14 15 16 17 18 19

 Show 17 with the cubes. Now, take this number
apart to show a group of ten and extra ones.
Complete the sentence: 17 is _____ and _____.