

3 Use  as 1 unit.

This brush is about _____ units long.



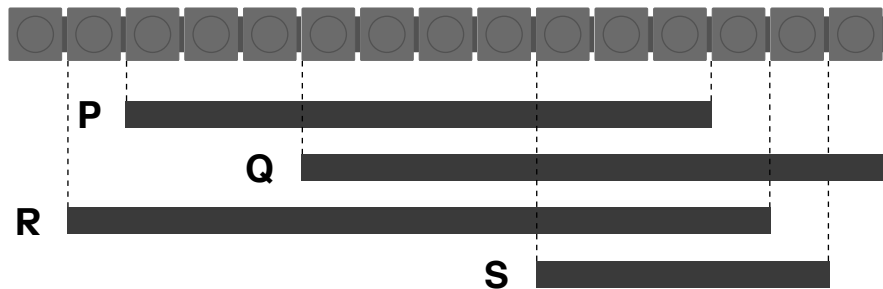
A 2

B 7

C 4

D 9

4 Which ribbon is 7 units longer than Ribbon S?



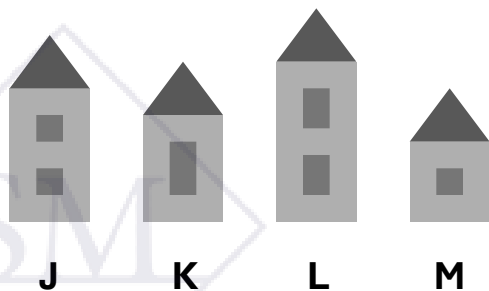
A P

B Q

C R

D S

5 Which one shows the buildings arranged in order, from shortest to tallest?



A J, K, L, M

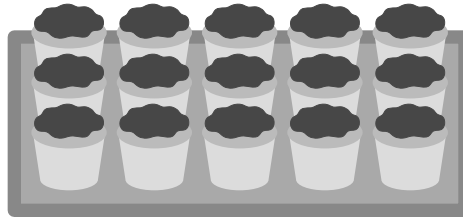
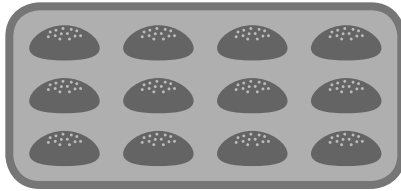
B M, K, J, L

C L, J, K, M

D M, L, K, J

Section B (2 points each)

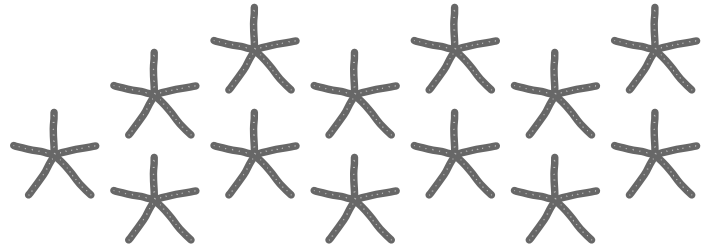
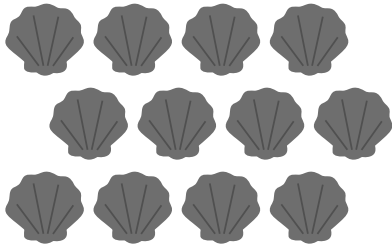
6



There are _____ more  than .

7

How many fewer shells than starfish are there?

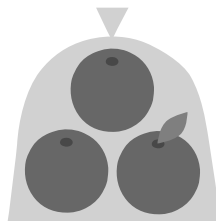
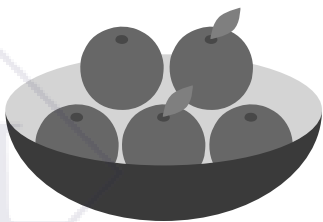


$$13 - 12 = \square$$

There is _____ fewer shell than starfish.

8

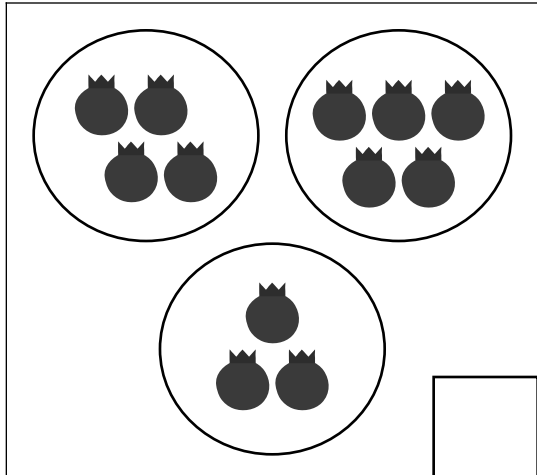
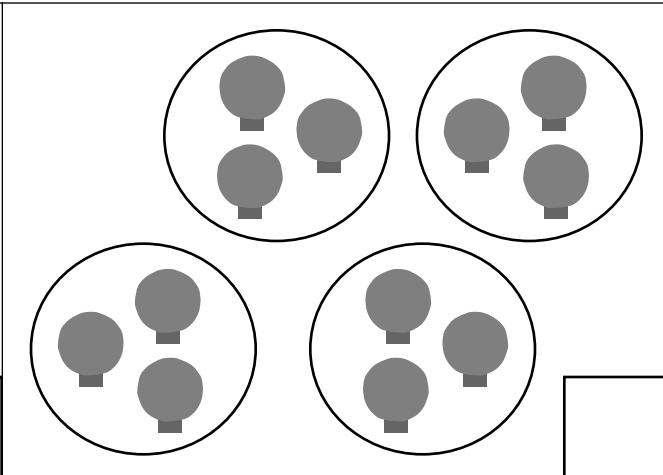
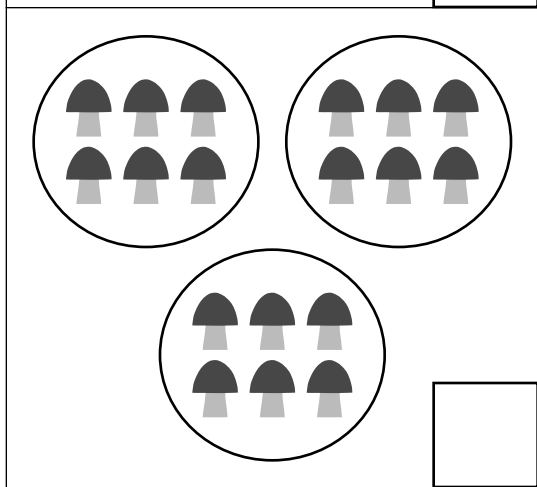
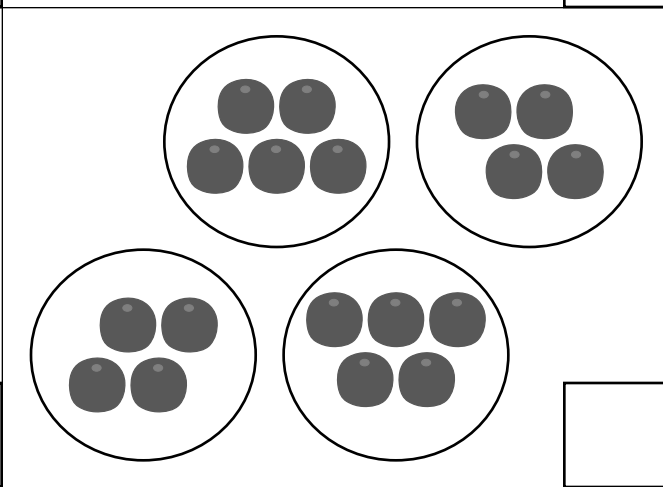
Are there more oranges in the bowl or in the bag?
How many more?



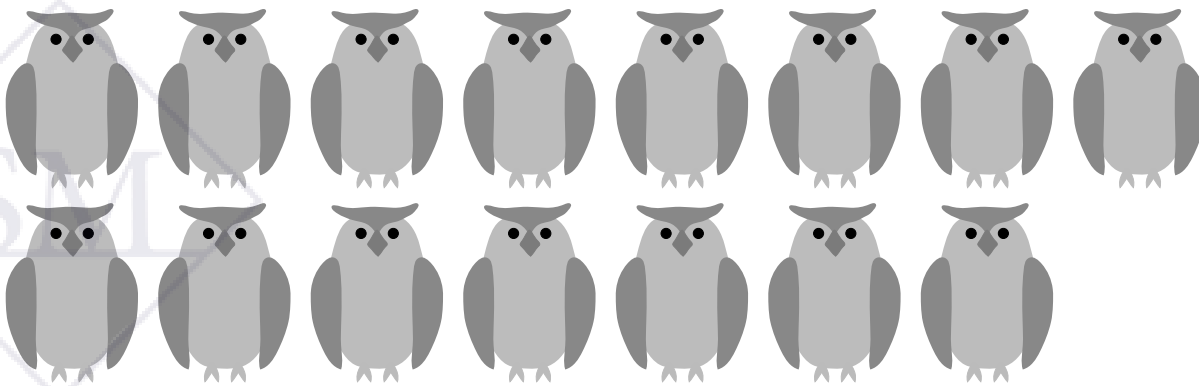
$$\square - 3 = \square$$

There are _____ more oranges in the _____.

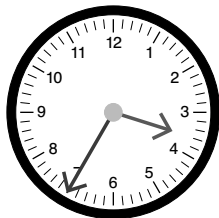
8 Check (✓) the set that shows 4 groups of 3.

9 There are 15 owls.
Circle groups of 3.



- 13** Dion will be home in 10 minutes at 3:35.
What time is it now?

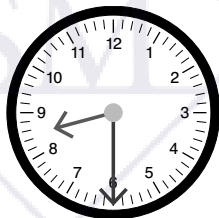


The time now is : .

- 14** Emma gets on the school bus at 7:20.
Alex gets on the school bus at a quarter past 7.
Who gets on the school bus first?

_____ gets on the school bus first.

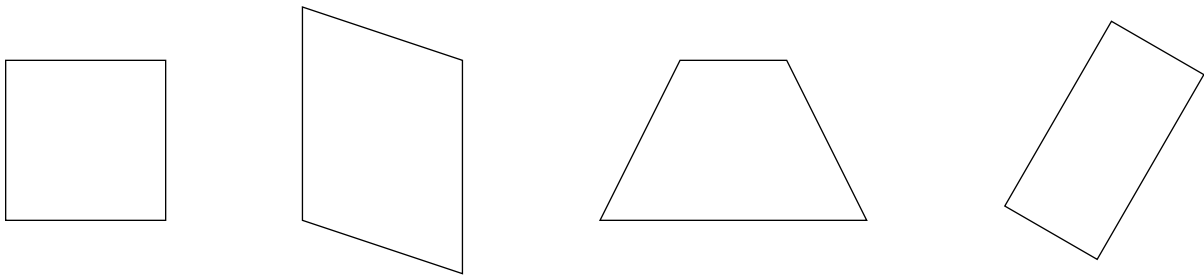
- 15** Mei goes to bed at 8:30.
Sofia goes to bed 20 minutes later than Mei.
What time does Sofia go to bed?



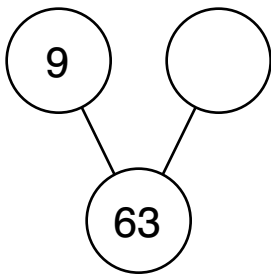
Sofia goes to bed at : .

Section B (2 points each)

16 Cross out the shape that does not belong.



17 Write the missing number.



18 Cross out the flamingo that is 3rd from the right.
Circle the flamingo that is in the middle.

